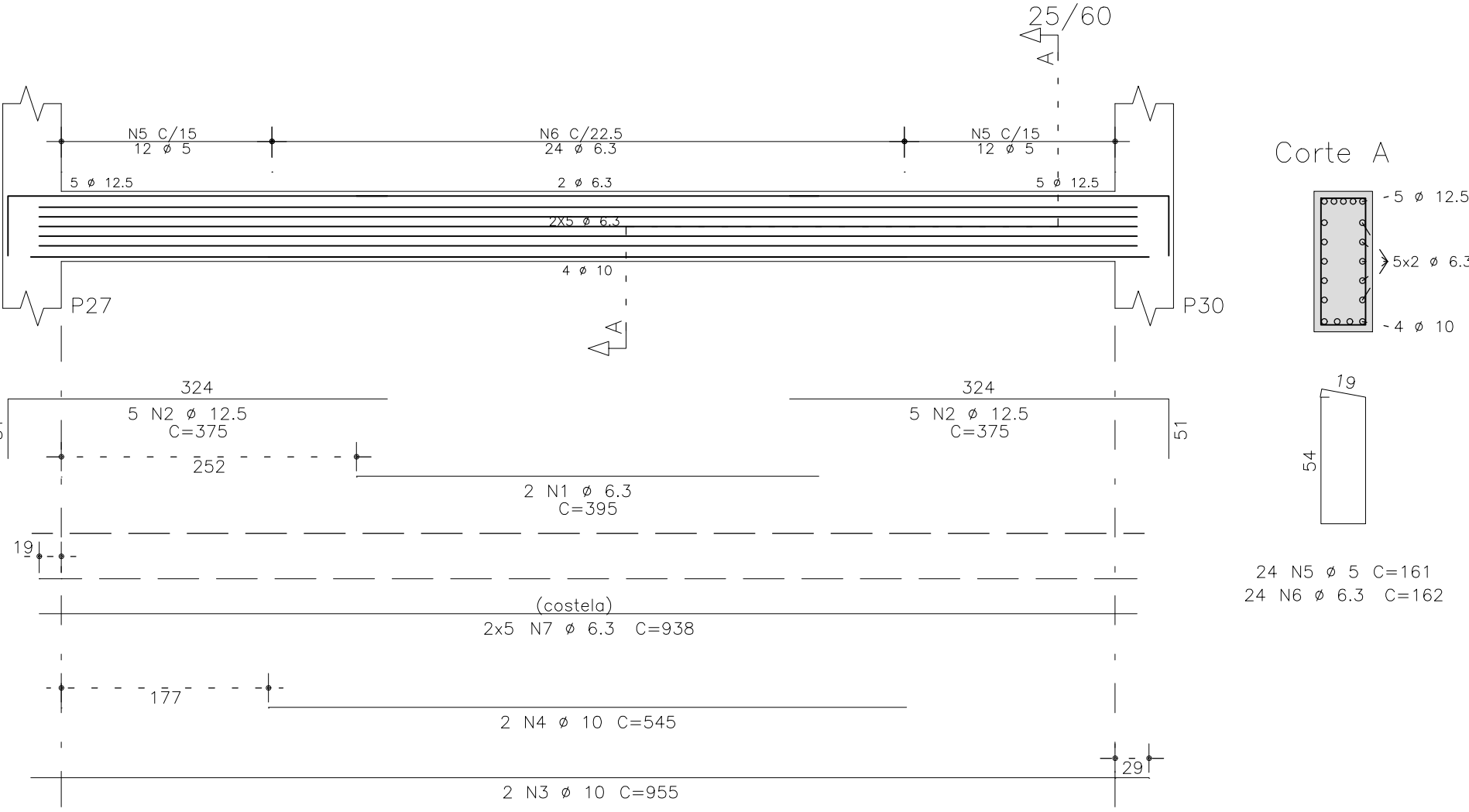
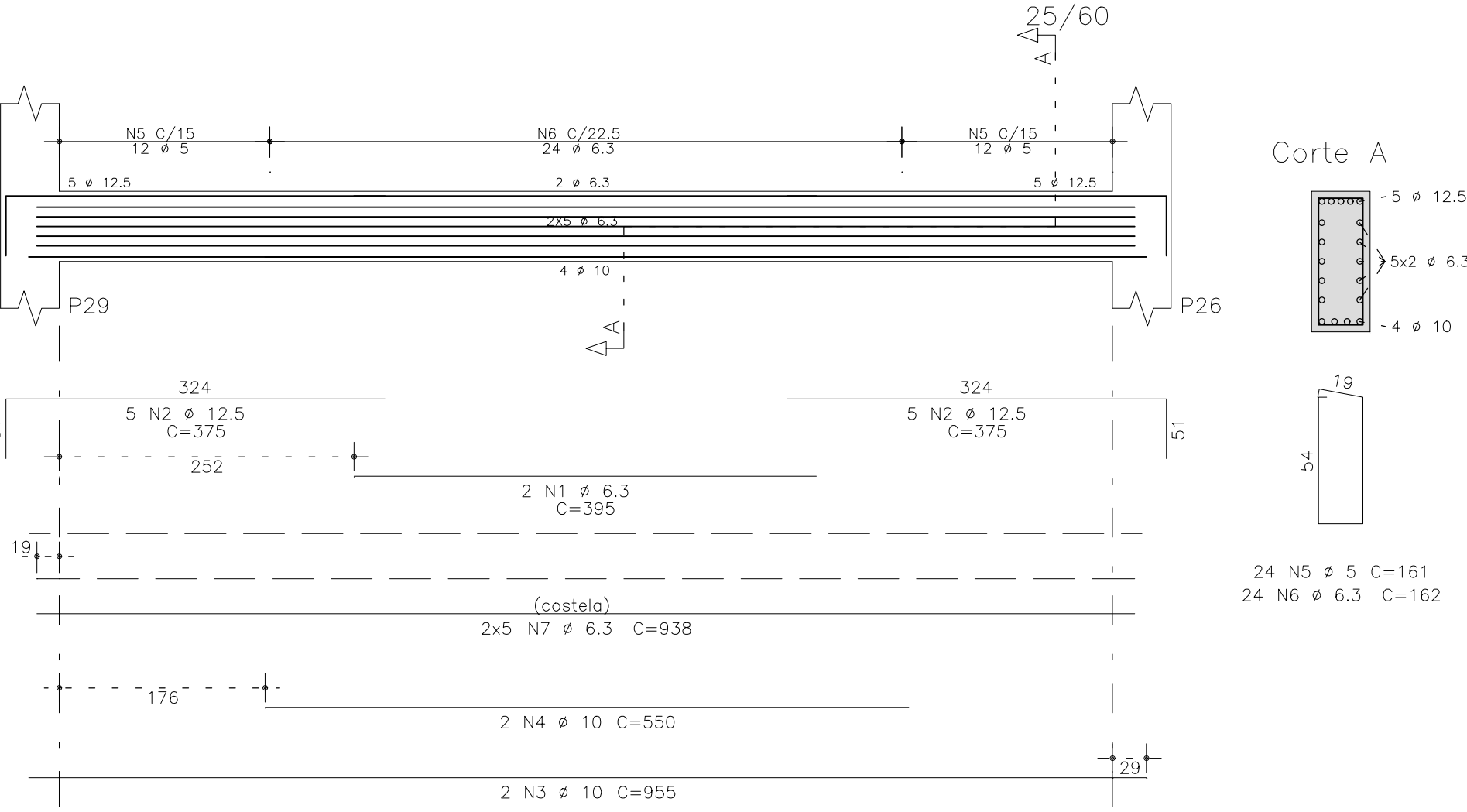


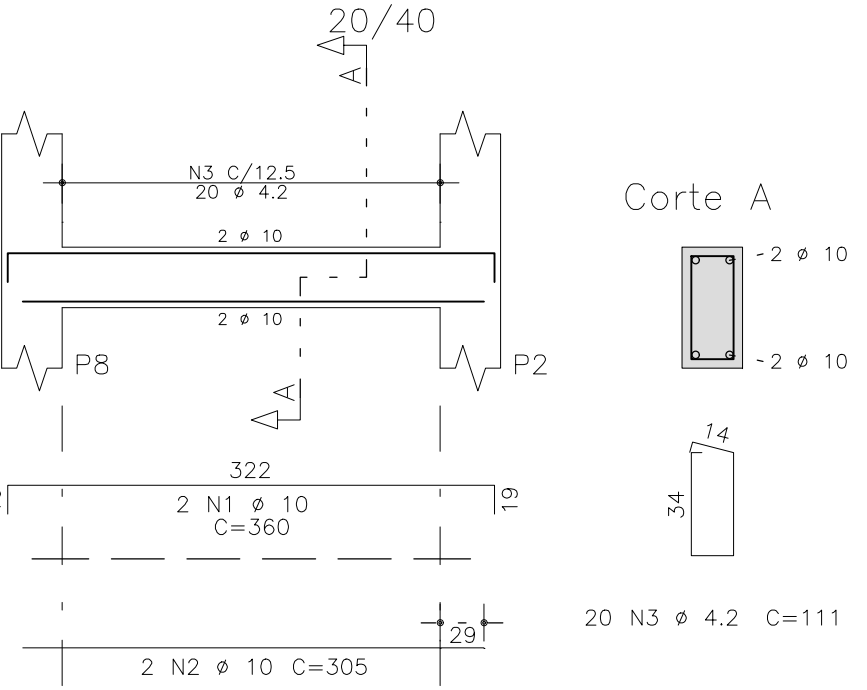
V115



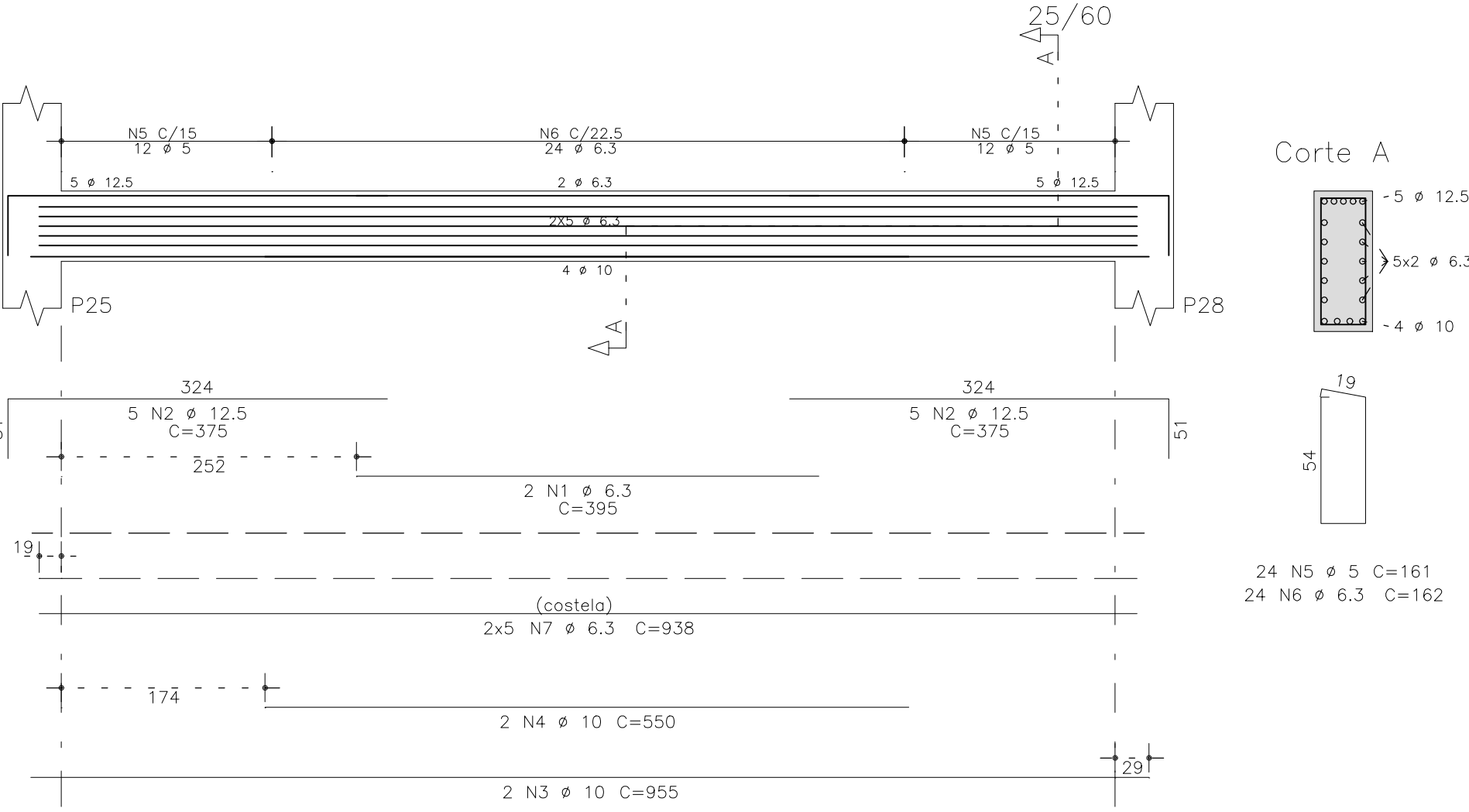
V118



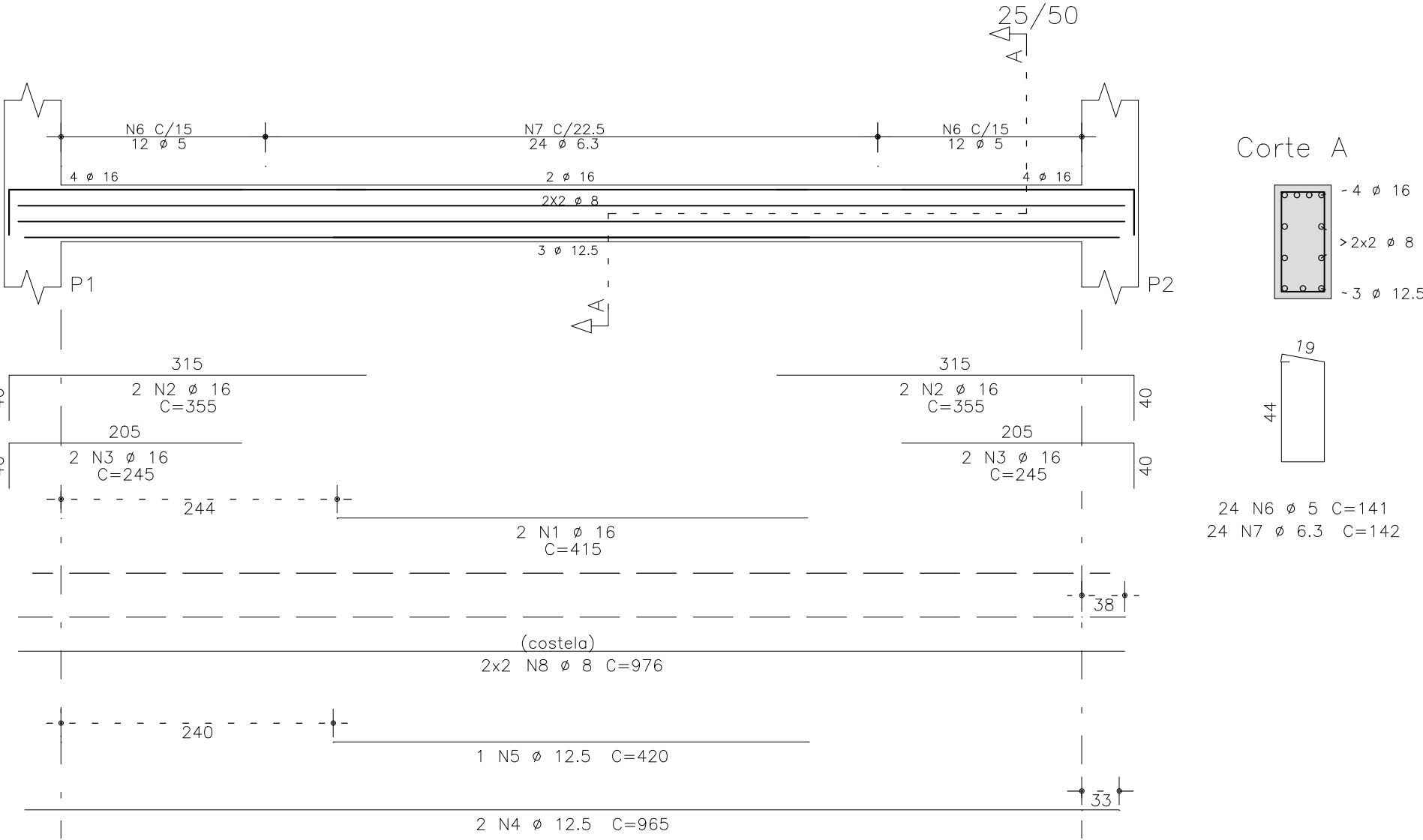
V122



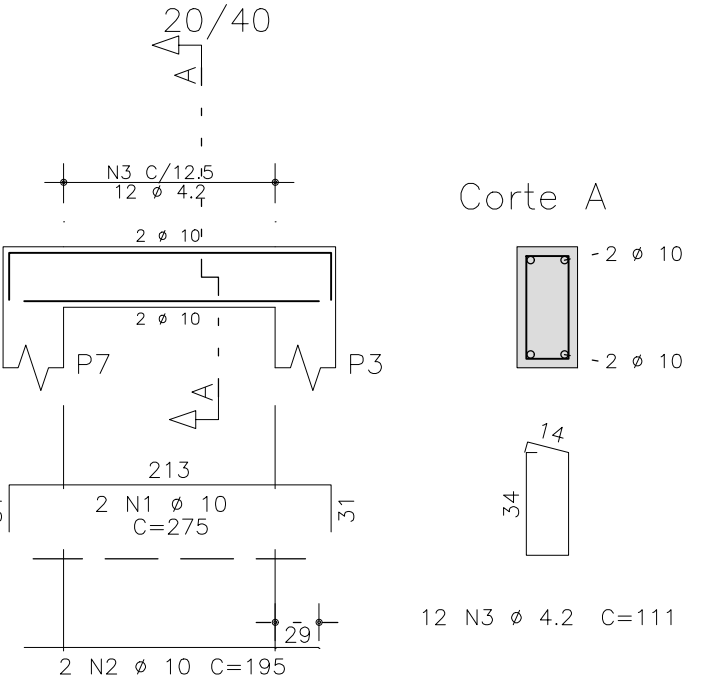
V112



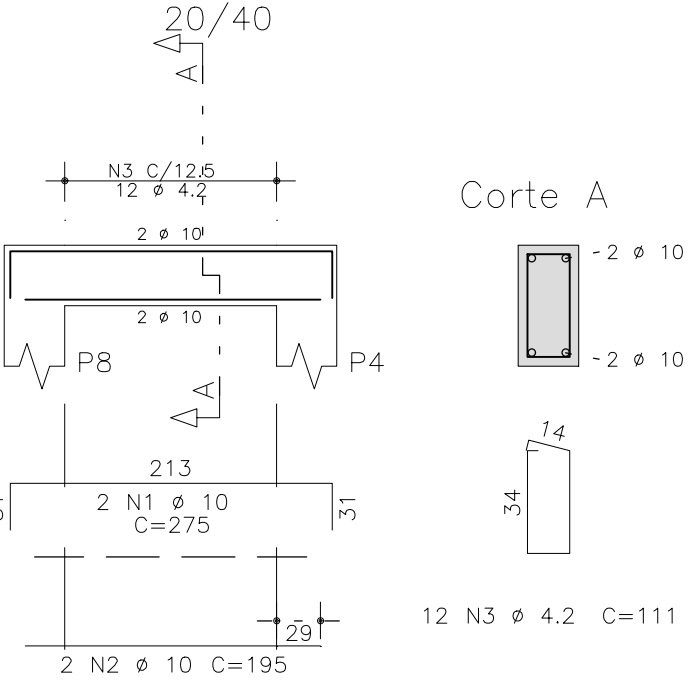
V2



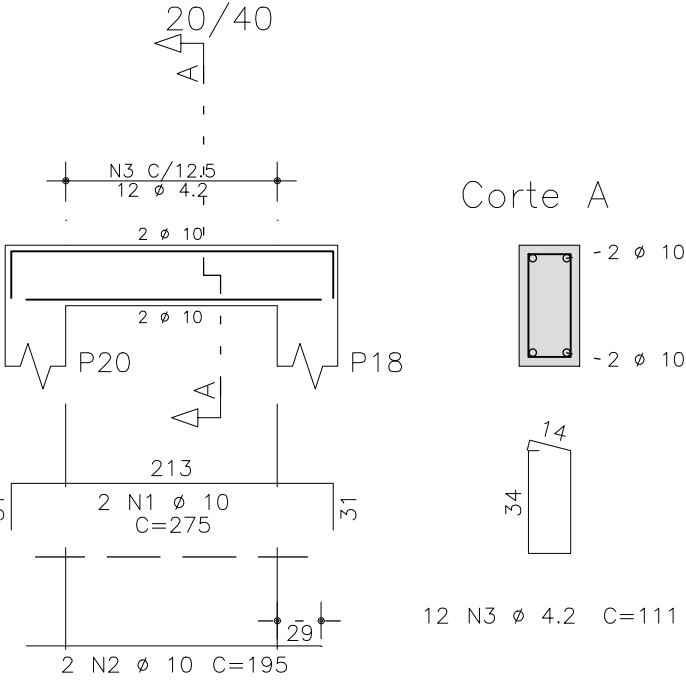
V116



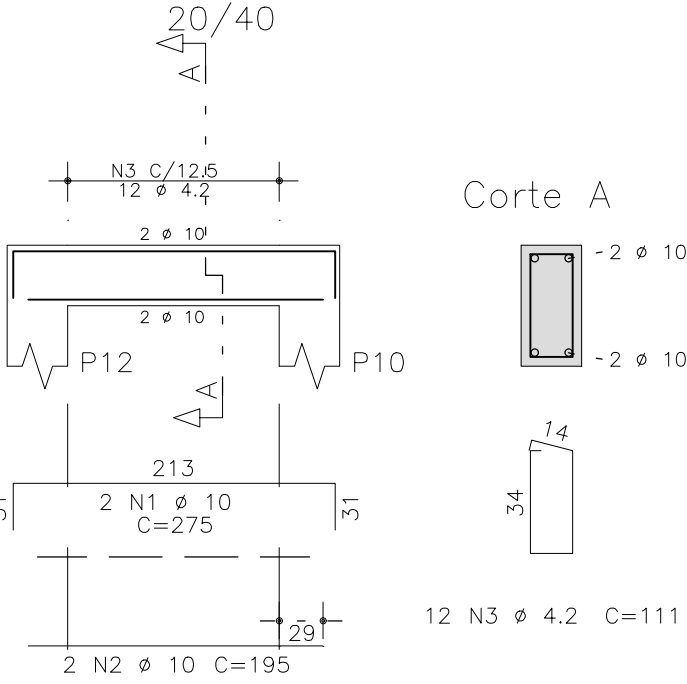
V117



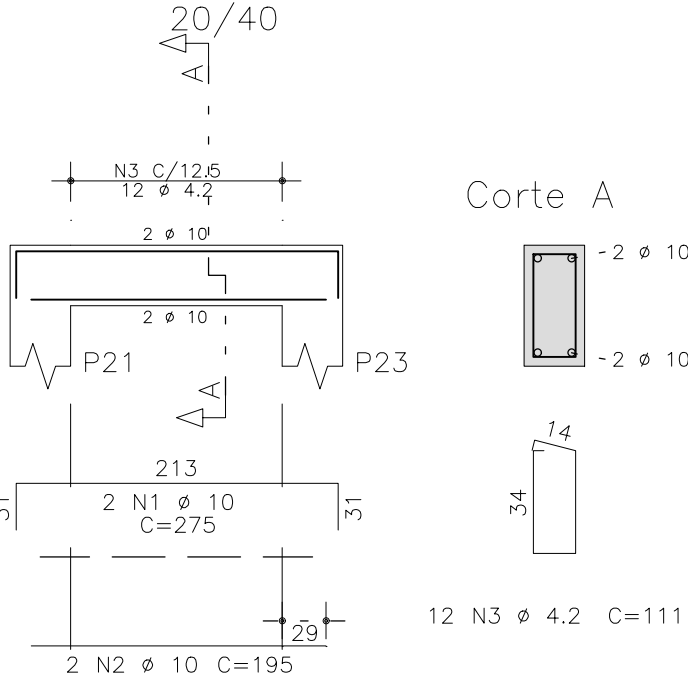
V107



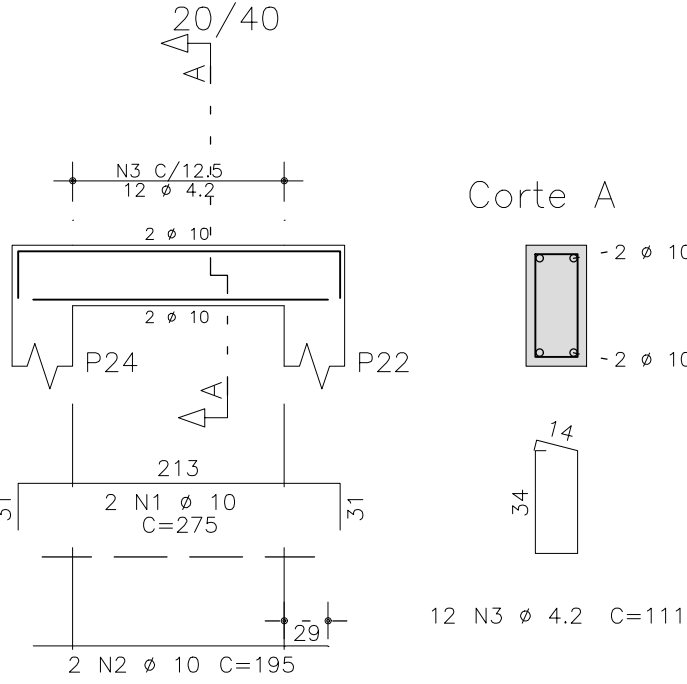
V119



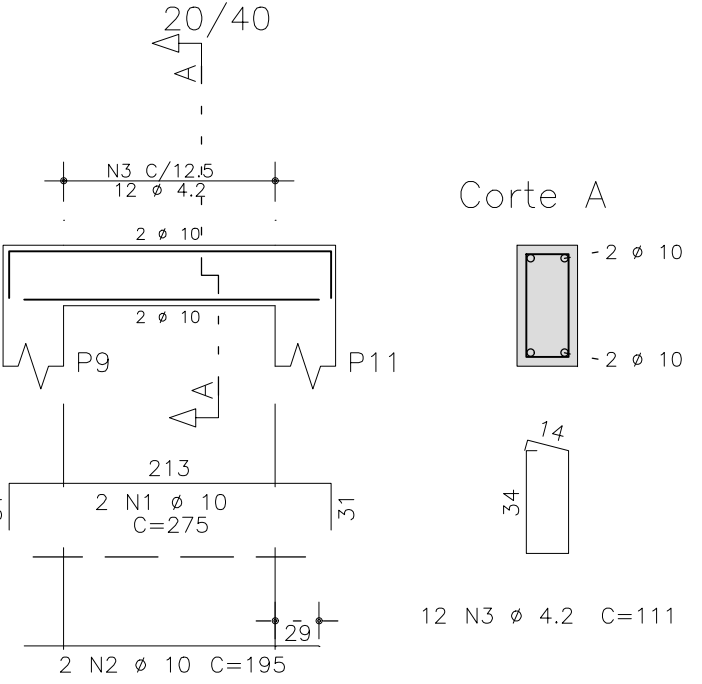
V108



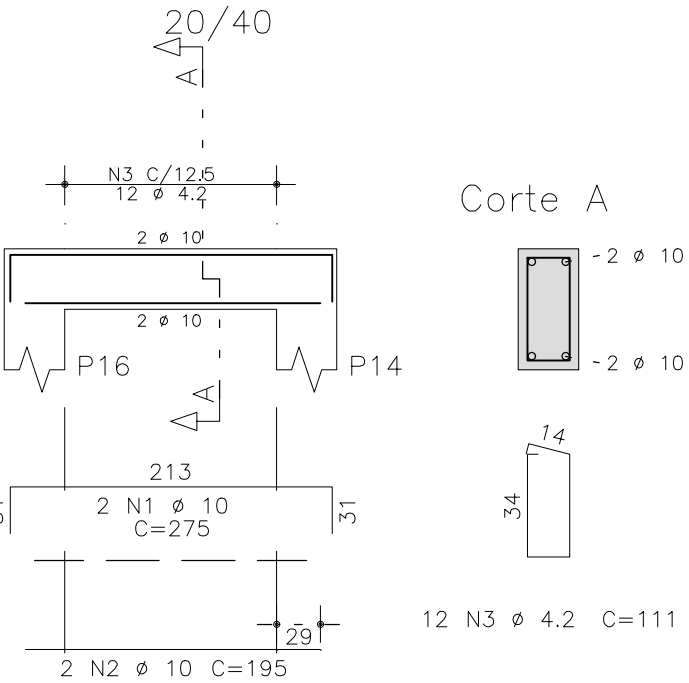
V109



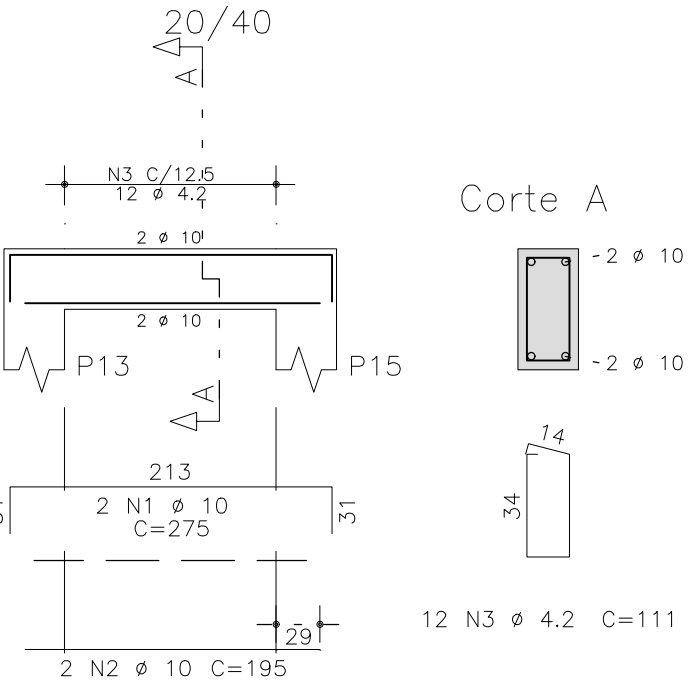
V103



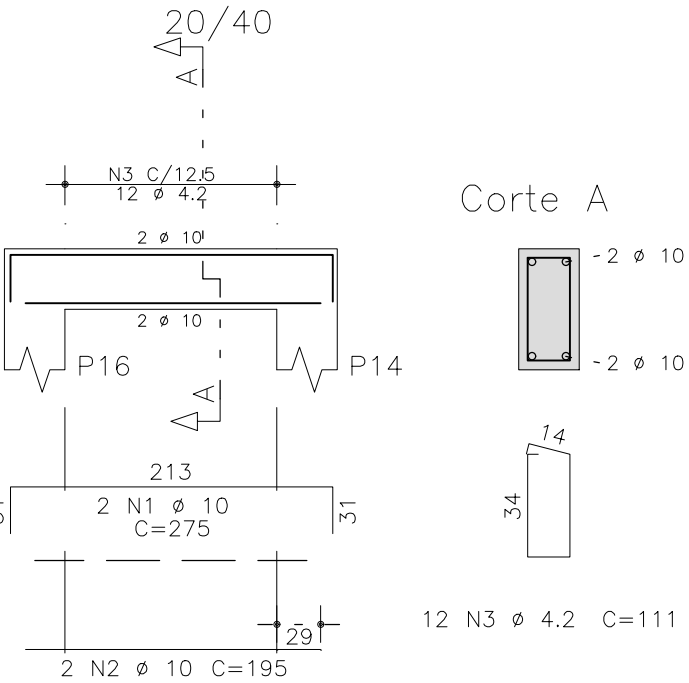
V123




V104



V105



fck 250. kg/cm<sup>2</sup> – C25

 Schuring & Schuring Ltda. Escritório Técnico B.E.SCHURING – Projetos de Engenharia Av. XV de Novembro, 489 – Porto 2o. Andar – Cuiabá MT Fone:(065) 321 9959 – Fax:(065) 623 5066 – Email – schuring@terra.com.br	
PROJETO:	PROPRIETÁRIO: PREFEITURA MUNICIPAL DE VÁRZEA GRANDE
RESP. TEC. EXECUÇÃO:	OBRA: PARQUE BERNECK-PARQUE AQUATICO
END.: Av. Julio Campos, SN – Bairro Água Vermelha Várzea Grande MT	
AUTORES DO PROJETO:	
ASSUNTO: BALDRAME DET ARM VIGAS	
PECAS DETALHADAS V2 / V103 / V104 / V105 / V107 / V108 V109 / V112 / V115 / V116 / V117 / V118 V119 / V122 / V123	
FOLHA: 250	DIREITOS AUTORAIS RESERVADOS VERIFICAR MEDIDAS NA OBRA
ESCALA: 1:50	ARQUIVO:
DATA: 18/05/2020	FOLHA No. 10